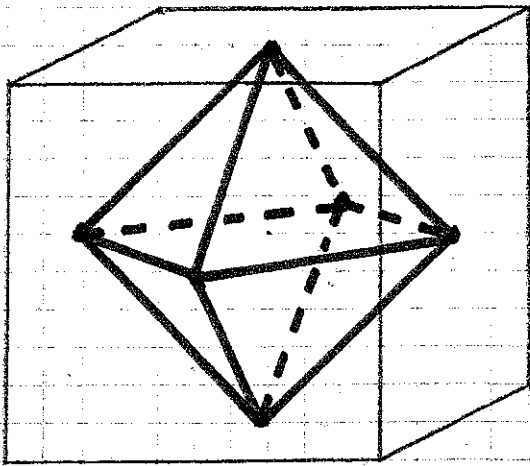
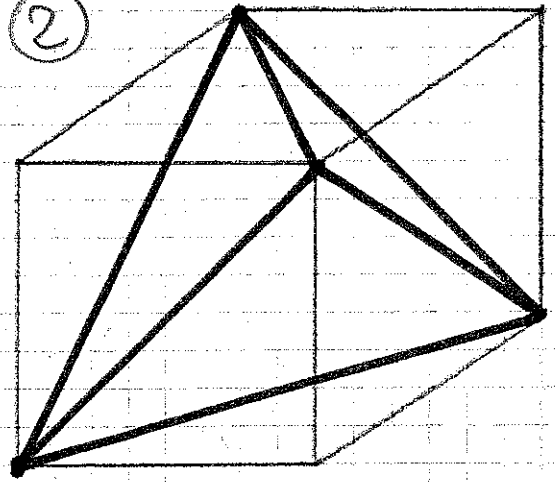


①



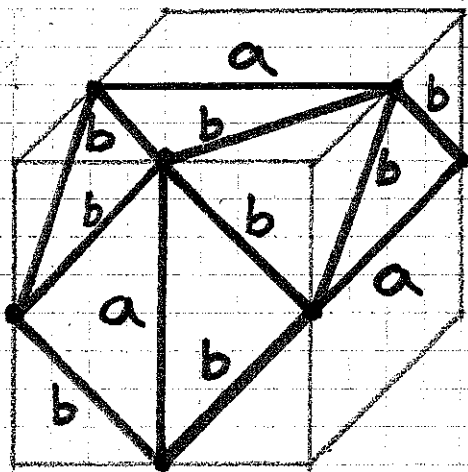
Oktaeder
im Würfel

②



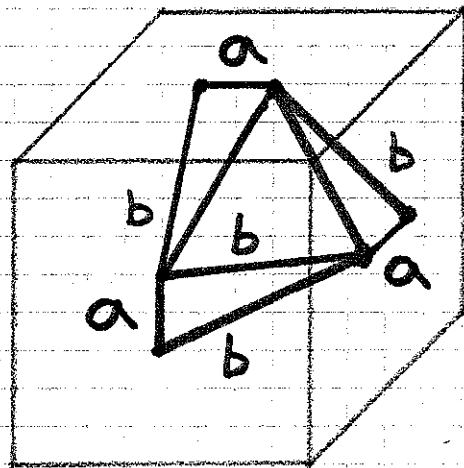
Tetraeder
im Würfel

③



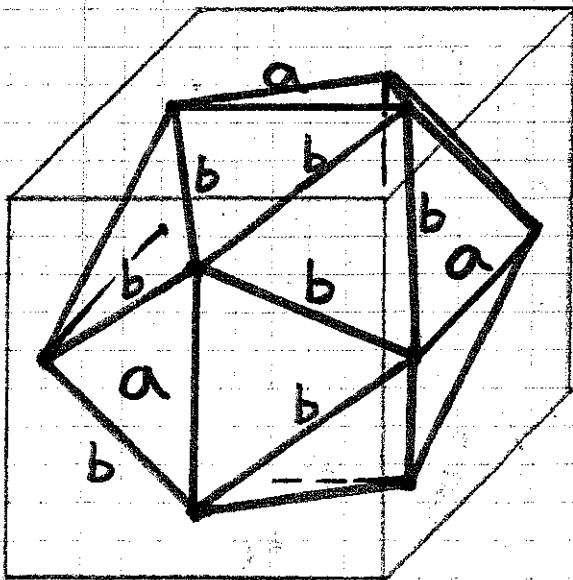
$$a > b$$

④



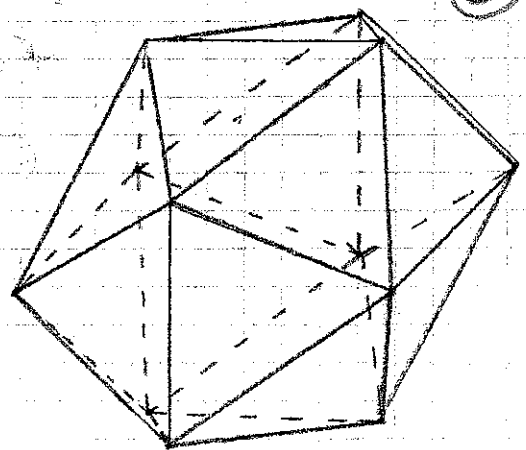
$$a < b$$

⑤



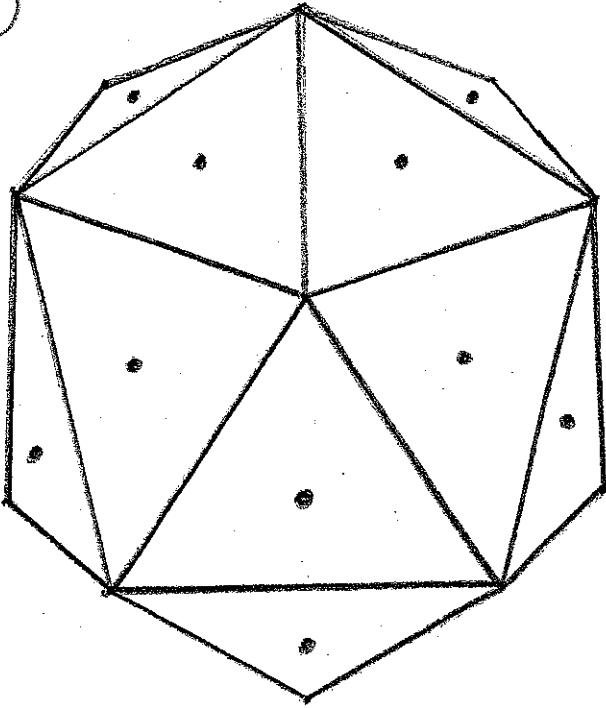
$$a = b$$

⑥



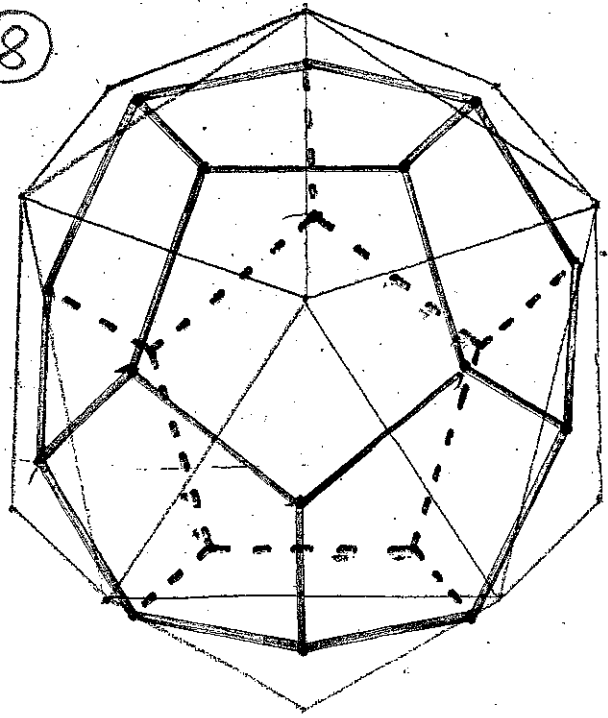
Ikosaeder

7



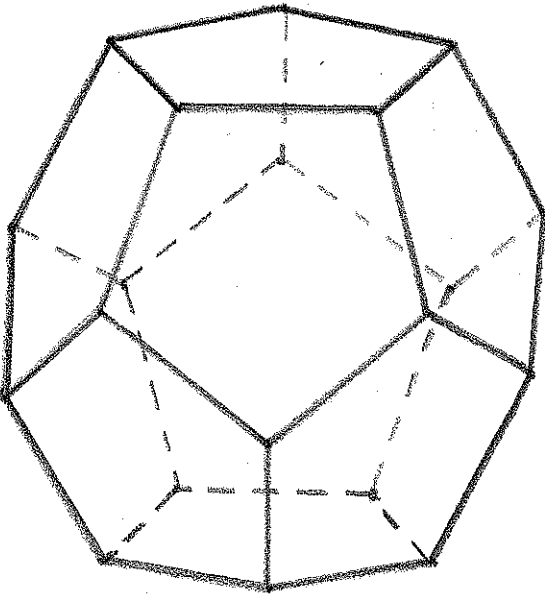
Flächenmittelpunkte
des Ikosaeders

8



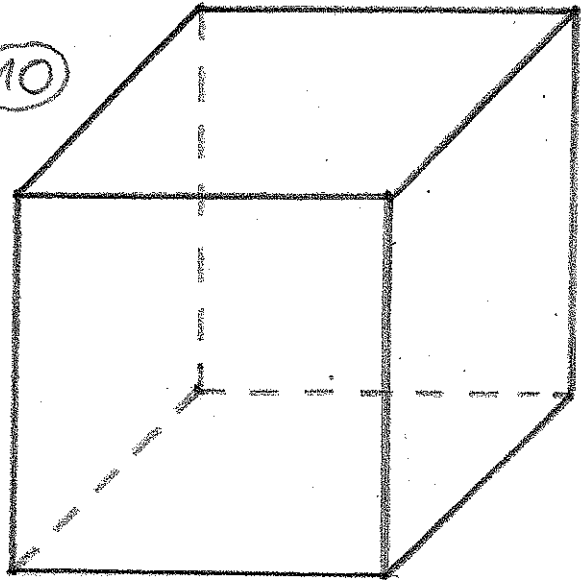
Dodekaeder im
Ikosaeder

9



Dodekaeder

10



Hexaeder (Würfel)

Name	Flächen	Ecken	Kanten	Kanten pro Fläche	Nachbarn pro Ecke
Tetraeder	4	4	6	3	3
Hexaeder	6	8	12	4	3
Oktaeder	8	6	12	3	4
Dodekaeder	12	20	30	5	3
Ikosaeder	20	12	30	3	5